

HOSES FOR ROOM #1

NOTE: HOSES (E) AND (F) ARE INCLUDED WITH THE ROOM EXTENSION MECHANISM

(A) .25' ID HOSE ASSY  
ROD END - ALWAYS PRESSURIZED

(B) .25' ID HOSE ASSY  
CAP END (ROOM)

(C) .125' ID OR 03 HOSE ASSY  
ROD END - ALWAYS PRESSURIZED  
HOSES MUST MAINTAIN EQUAL  
LENGTH AND DIAMETER

(D) .25' ID HOSE ASSY  
CAP END - HOSES MUST MAINTAIN  
EQUAL LENGTH AND DIAMETER

(E) AP24632 HOSE ASSY HWH02HP x 48'  
ROD END - ALWAYS PRESSURIZED -  
HOSES MUST MAINTAIN EQUAL  
LENGTH AND DIAMETER

(F) AP24818 HOSE ASSY HWH02HP x 86'  
CAP END - MUST MAINTAIN EQUAL  
LENGTH AND DIAMETER

(1) .25' ID HOSE ASSY  
CAP END (LIFT)

(2) .25' ID HOSE ASSY  
CAP END (ROOM)

(3) .25' ID HOSE ASSY  
CAP END (ROOM)

(4) .25' ID HOSE ASSY ROD END (LIFT)  
ALWAYS PRESSURIZED

(5) .25' ID HOSE ASSY  
CAP END (LIFT)

(6) .25' ID HOSE ASSY  
ROD END - ALWAYS PRESSURIZED (LIFT)

(7) .25' ID HOSE ASSY ROD END (LIFT)  
ALWAYS PRESSURIZED

(8) .25' ID HOSE ASSY  
CAP END LIFT

(9) .25' ID HOSE ASSY  
ROD END LIFT

(10) .25' ID HOSE ASSY  
CAP END LIFT

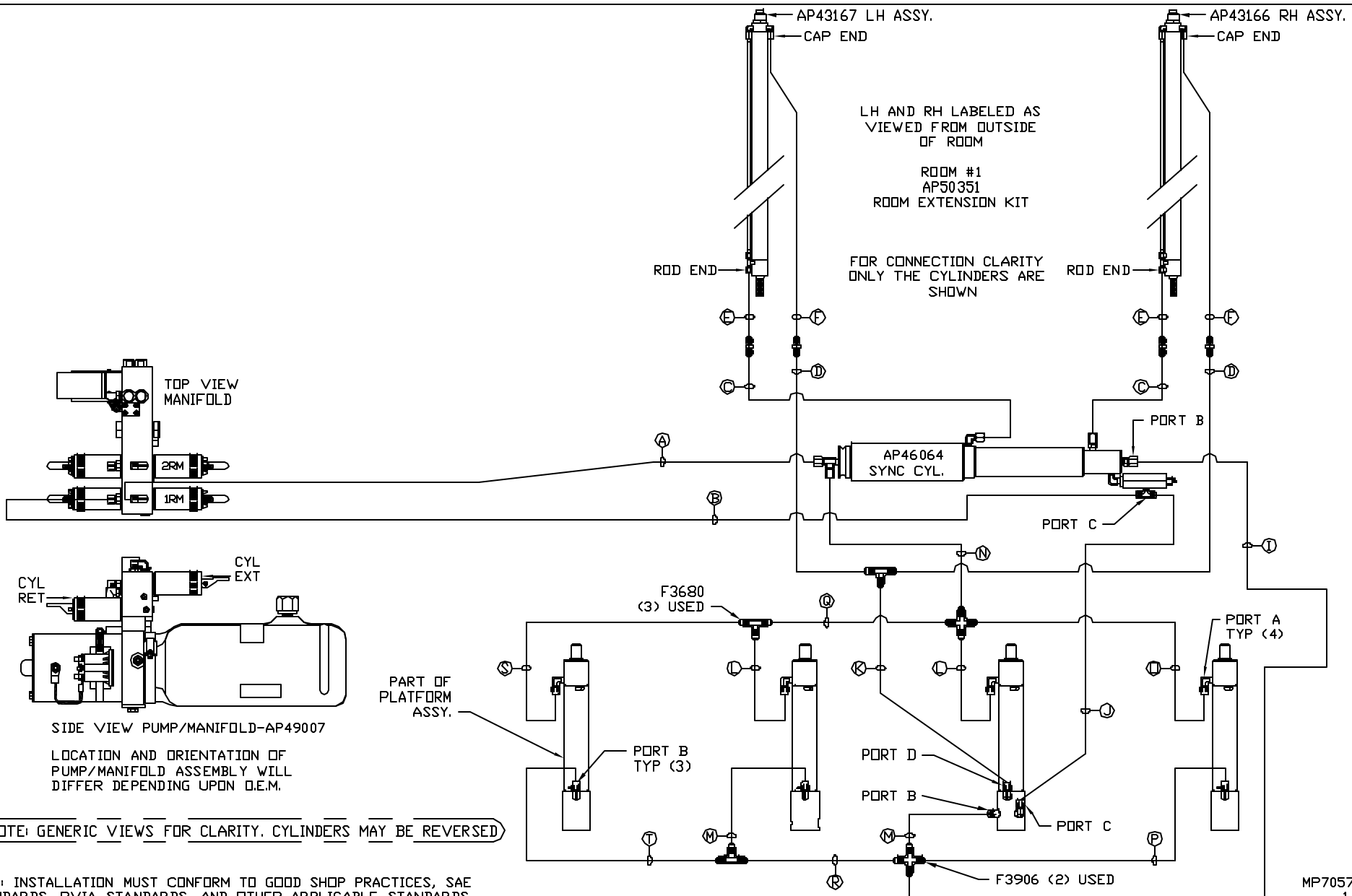
(11) .25' ID HOSE ASSY  
ROD END LIFT

(12) .25' ID HOSE ASSY  
CAP END LIFT

NOTE: INSTALLATION MUST CONFORM TO GOOD SHOP PRACTICES, SAE STANDARDS, RVIA STANDARDS, AND OTHER APPLICABLE STANDARDS.

CONTROL PACKAGE: AP50349

		HWH		I-80 EXIT 267 SOUTH RT 1 MOSCOW, IOWA 52760	
		SCALE 1:6	DATE 14AUG12	DRAWN BY .	
		HYD CONN DIAGRAM			
NO.	DATE	REVISION			
		THE INFORMATION DISCLOSED ON THIS DRAWING IS CONFIDENTIAL AND MUST NOT BE DISCLOSED OR USED IN ANY MANNER WHICH WILL BE DETRIMENTAL TO THE HWH CORPORATION		DRAWING NUMBER MP70577 A/D	
		PK VANS			



NOTE: INSTALLATION MUST CONFORM TO GOOD SHOP PRACTICES, SAE STANDARDS, RVIA STANDARDS, AND OTHER APPLICABLE STANDARDS.

MP70577 B/D  
14AUG12

HOSES FOR ROOM #2

NOTE: HOSES (E) AND (F) ARE INCLUDED WITH THE ROOM EXTENSION MECHANISM

(A) .25' ID HOSE ASSY  
ROD END - ALWAYS PRESSURIZED

(B) .25' ID HOSE ASSY  
CAP END (ROOM)

(C) .125' ID DR 03 HOSE ASSY  
ROD END - ALWAYS PRESSURIZED  
HOSES MUST MAINTAIN EQUAL  
LENGTH AND DIAMETER

(D) .25' ID HOSE ASSY  
CAP END - HOSES MUST MAINTAIN  
EQUAL LENGTH AND DIAMETER

(E) AP24632 HOSE ASSY HWH02HP x 48'  
ROD END - ALWAYS PRESSURIZED -  
HOSES MUST MAINTAIN EQUAL  
LENGTH AND DIAMETER

(F) AP24818 HOSE ASSY HWH02HP x 86'  
CAP END - MUST MAINTAIN EQUAL  
LENGTH AND DIAMETER

(1) .25' ID HOSE ASSY  
CAP END (LIFT)

(2) .25' ID HOSE ASSY  
CAP END (ROOM)

(3) .25' ID HOSE ASSY  
CAP END (ROOM)

(4) .25' ID HOSE ASSY ROD END (LIFT)  
ALWAYS PRESSURIZED

(5) .25' ID HOSE ASSY  
CAP END (LIFT)

(6) .25' ID HOSE ASSY  
ROD END - ALWAYS PRESSURIZED (LIFT)

(7) .25' ID HOSE ASSY ROD END (LIFT)  
ALWAYS PRESSURIZED

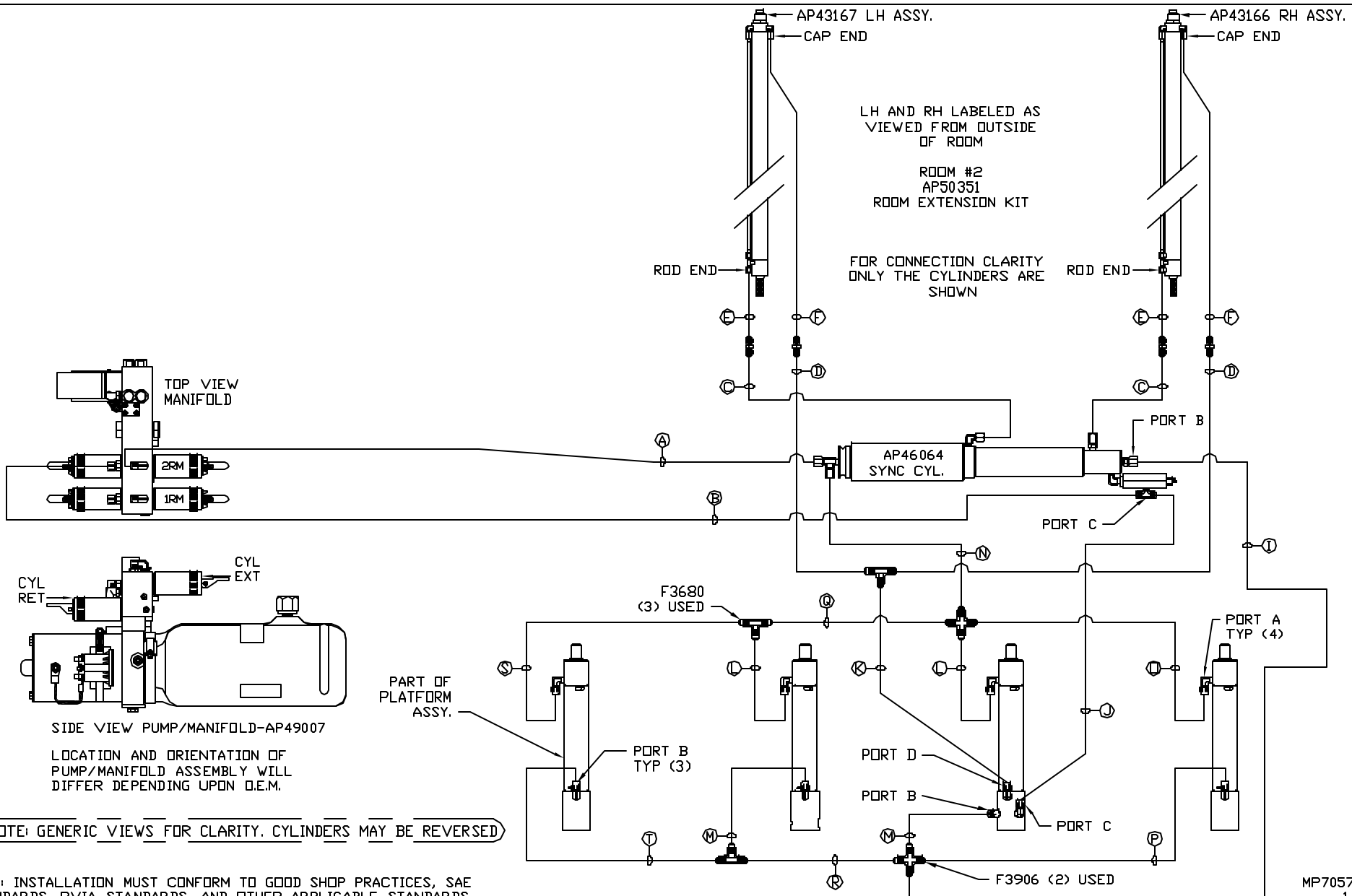
(8) .25' ID HOSE ASSY  
CAP END LIFT

(9) .25' ID HOSE ASSY  
ROD END LIFT

(10) .25' ID HOSE ASSY  
CAP END LIFT

(11) .25' ID HOSE ASSY  
ROD END LIFT

(12) .25' ID HOSE ASSY  
CAP END LIFT



NOTE: INSTALLATION MUST CONFORM TO GOOD SHOP PRACTICES, SAE STANDARDS, RVIA STANDARDS, AND OTHER APPLICABLE STANDARDS.

MP70577 D/D  
14AUG12